



Product info: Rofil Rofilan / Rofil Reviderm intra

Rofilan hylan gel	Product	Reviderm intra
RFL10	Product Code	RV10
2 of 1.0 ml	Number of Syringes	2 of 1.0 ml
3 x 30 G	Number of Needles	3 x 27 G
1.0 ml Rofilan contains:	Contents	1.0 ml Reviderm intra contains:
Synthetically Derived		Synthetically Derived
Hyaluronic Acid 20 mg		Hyaluronic Acid 20 mg
Sodium Chloride 9 mg		Dextran Microspheres 25 mg
Phosphate Buffer 1 mg		Sodium Chloride 9 mg
Sterile water for injection added up to 1 ml		Phosphate Buffer 1 mg
		Sterile water for injection added up to 1 ml



Rofilan[®]
HYLAN GEL

By **ROFIL**[®]

Reviderm[®]
INTRA

By **ROFIL**[®]



CE 1275

ROFIL[®]

Rofil Medical Nederland B.V.

Heusing 16 ∞ 4817 ZB Breda ∞ The Netherlands
T +31 (0)76 5315670 ∞ F +31 (0)76 5315660
E rmi@rofil.com ∞ 1 www.rofil.com

THE BEAUTY PHILOSOPHY

REVROFTBROENG.002

Reviderm intra

When your patients ask for longer-lasting results

Rofilan hylan gel

When your patients ask for a natural solution

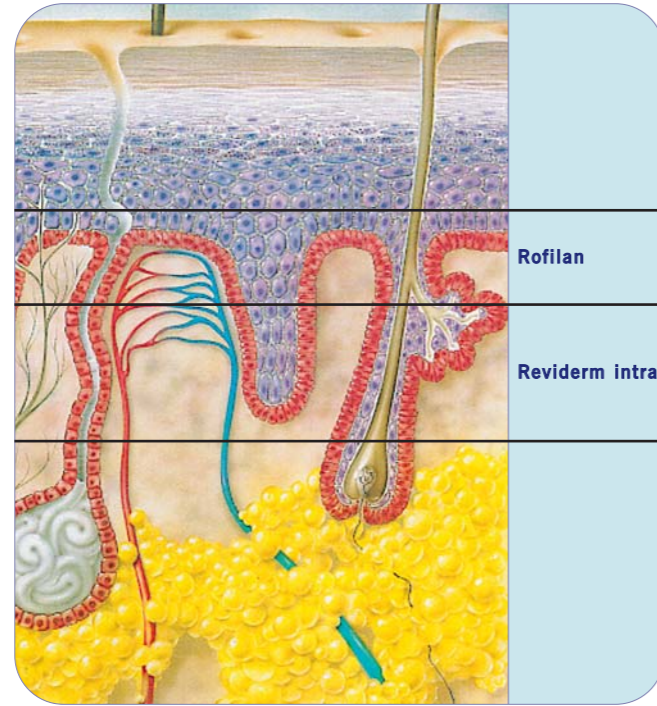
Soft tissue augmentation with Rofilan hylan gel and Reviderm intra.

Injectable implants enjoy an increasing popularity. They combine excellent results (that could previously be reached exclusively by surgical intervention) with an extremely patient-friendly character. For the treatment of wrinkles and soft tissue augmentation in general, Rofil offers two products, both based on the natural functionality of Hyaluronic Acid. Hyaluronic Acid is a polysaccharide with a high molecular weight consisting of linear chains of repeating disaccharide units. This Hyaluronic Acid, produced in large quantities by the human body, regulates hydration by acting as a space filler by binding to water, and protects the skins structural composition.

Crosslinked Hyaluronic Acid

The Hyaluronic Acid used in Rofilan and Reviderm intra is of a unique character. The product has an **inter-molecular** crosslinking, which leads to increased long-lasting stability, thereby enhancing the duration of the final result. The Hyaluronic Acid used in Rofilan and Reviderm intra is safe, since it is of a non-animal source, derived through exfermentation of bacteria. On top of that the HA-molecule is extraordinarily long, forcing it to coil into spiral formations, that give ample protection against premature degradation.

Both Rofilan and Reviderm intra are based on the natural functionality of HA. Rofilan is most suited for first time users, as it does not contain more permanent elements. Patients in doubt whether the results fit their personality will feel comfortable with the less intrusive 'Filler'-treatment provided by Rofilan. The Reviderm intra "Dual mode of Action" - Treatment adds the functionality of patented, perfectly rounded microspheres, making it more suitable for men and women seeking semi-permanent results.



Injection depth of Reviderm intra and Rofilan.

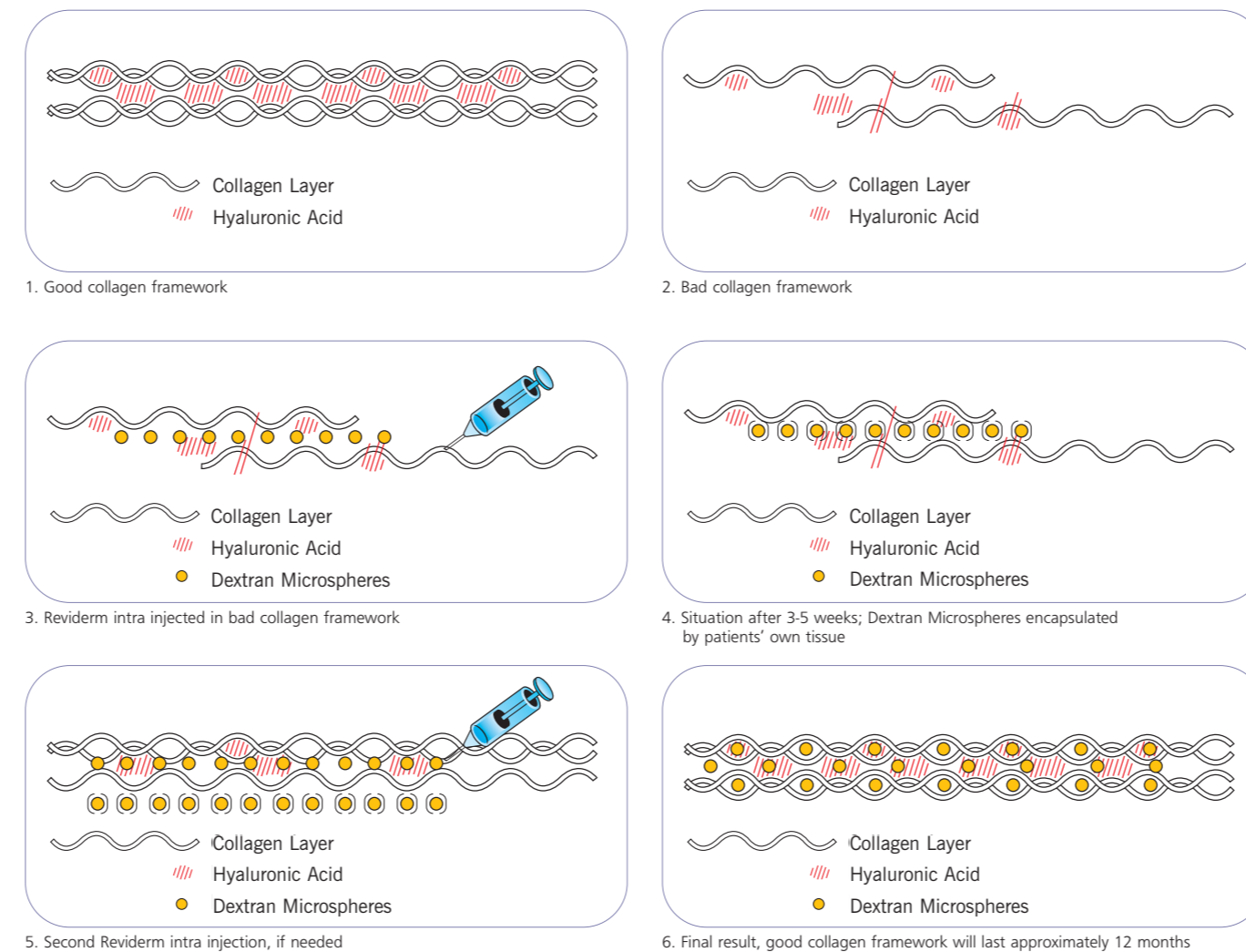


Reviderm intra dual mode of action: microspheres stimulate the synthesis of collagen fibrils.

The long lasting effect of Reviderm intra is based on the combination of cross-linked Hyaluronic Acid and Sephadex® Microspheres. Replacement of HA-depots is augmented by the production of collagen, stimulated by the microspheres: Dual mode of action. The extremely small (40-60 micron) but perfectly rounded microspheres, which are electrostatically charged, stimulate the synthesis of collagen fibrils, which support and improve the skin's condition and flexibility. As such Reviderm intra is a semi-permanent wrinkle-filling product, perfectly suited for patients desiring long term results, but with a particular preference for natural products, and a certain reluctance to choose for permanent implants. Treatment is simple, smooth and gentle, and has to be repeated once or twice in a three to six week period. After the first treatment immediate results are

evidently visible, as in this period collagen is naturally produced around the microspheres. The second treatment will provoke an additional layer of collagen fibres. The HA component will be trapped inside the new collagen matrix. Eventually the microspheres will dissolve completely, leaving the treated area with a firm collagen framework. Reviderm intra thus provides an optimal wrinkle treatment, as it both treats the deficiency of the collagen matrix (see visuals) as the deficiency of Hyaluronic Acid.

Indications: glabellar frowns, horizontal lines of the forehead, nasolabial folds, acne scars, perioral lines, corners of the mouth, lip augmentation and other facial wrinkles. Reviderm intra is less suited for the treatment of fine lines around the eyes.



Rofilan single mode of action: aiding the natural performance of hyaluronic acid with clearly visible results.

Hyaluronic Acid is essential to the natural structure of the skin. It's produced by means of a feedback system that either produces the Hyaluronic Acid, or degrades it by producing an enzyme Hyaluronidase. The HA used in Rofilan is cross-linked for increased stability and to ensure a sufficient period of occupancy. Because the HA molecule is very long, it coils into a spiral formation. The HA in Rofilan is crosslinked through the utilisation of Divinylsulfone and Hydroxypropyl Methylcellulose, which creates a strong crosslink. Due to the crosslinking technique the occupancy period of the HA in the skin is more predictable. Of course the effects of the injections may vary from person to person, but in general effects can be expected to last a spectacular six months or more, after which the procedure can be repeated. Rofilan thus provides an optimal wrinkle treatment.

Indications: fine horizontal lines of the forehead, crows feet, acne scars, perioral lines, lip augmentation and other facial wrinkles.

